

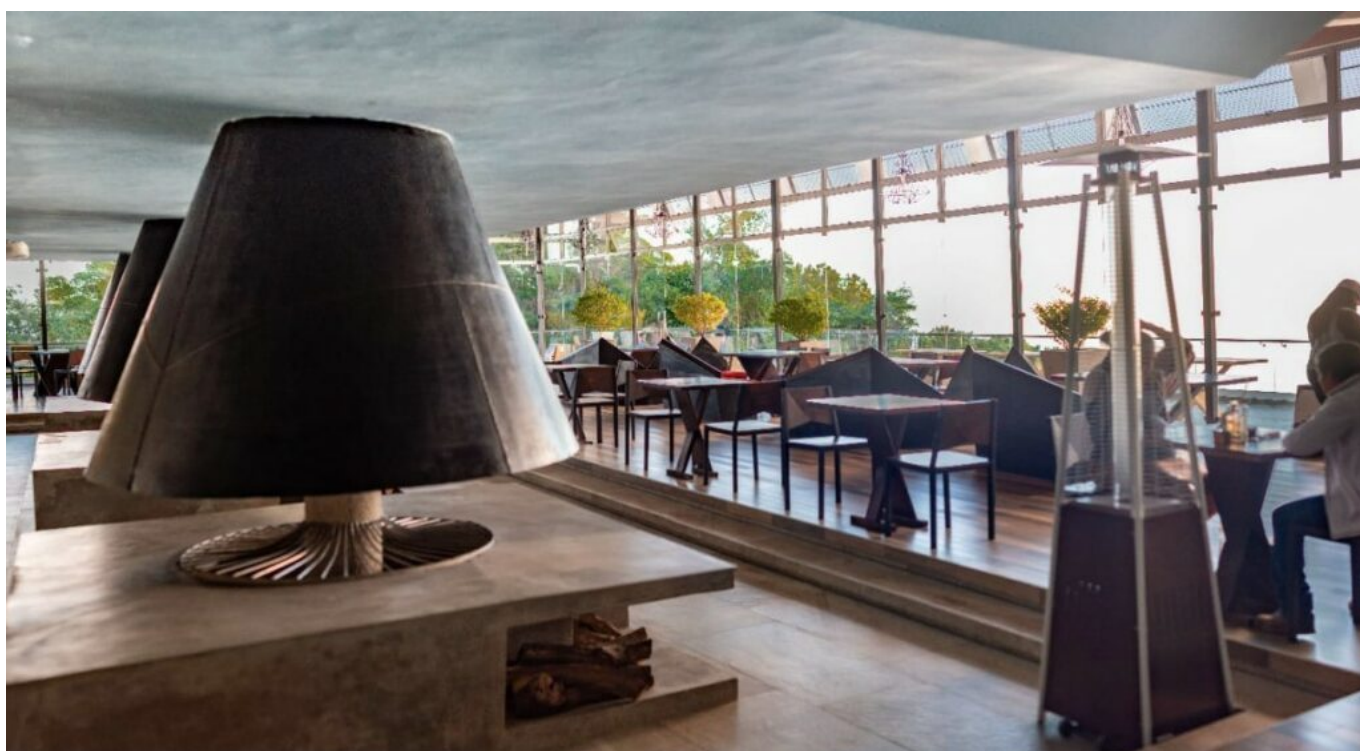


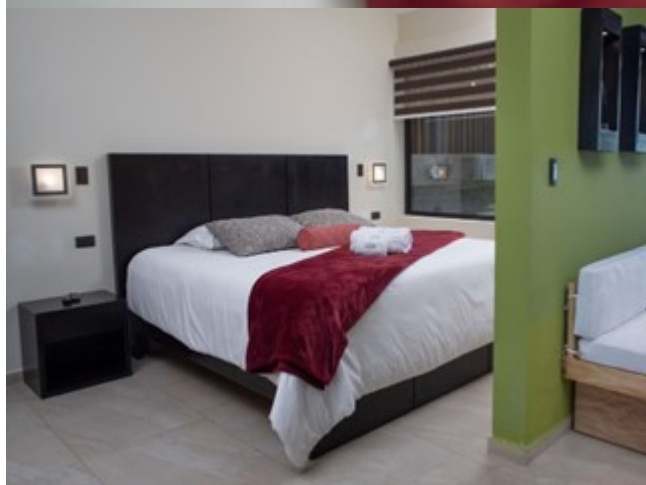
**Volcano View Suite Room (50m<sup>2</sup>):**

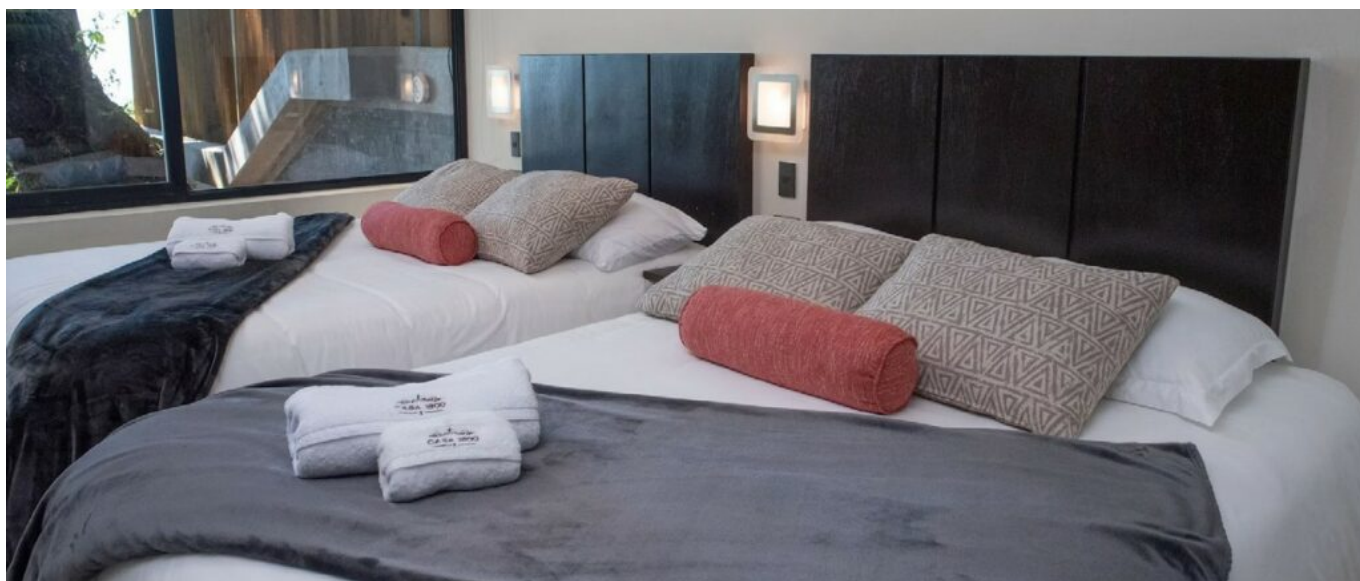
- 5 Suite with 1 King Size bed
- 5 Suites with 2 Queen Size beds

**Forest View Suite Room (50m<sup>2</sup>):**

- 4 Suite with 1 King Size bed
- 4 Suites with 2 Queen Size beds







### Information:

- Check in/out: 2PM/11AM
- Breakfast included
- Taxes included (18%)



**Tours available from this hotel:**

***The 7 waterfalls***

Walk along the internal trail of the Cerro Verde National Park where you can enjoy the flora and fauna of the place and with a cold climate that makes you live a fantasy experience among the clouds.

